

Abode of  
**Fortunate  
Fragrance**

**PALASH PRIME**  
PREMIUM LIVING





# PALASH PRIME

PREMIUM LIVING

Welcome to witness a premium living space  
where premium fragrance is in the atmosphere, welcome to Palash prime.  
This exclusive 3bhk apartment is the perfect place to live a happy life with your loved ones.  
This is situated at prime location of chandkheda surrounded by beautiful nature.

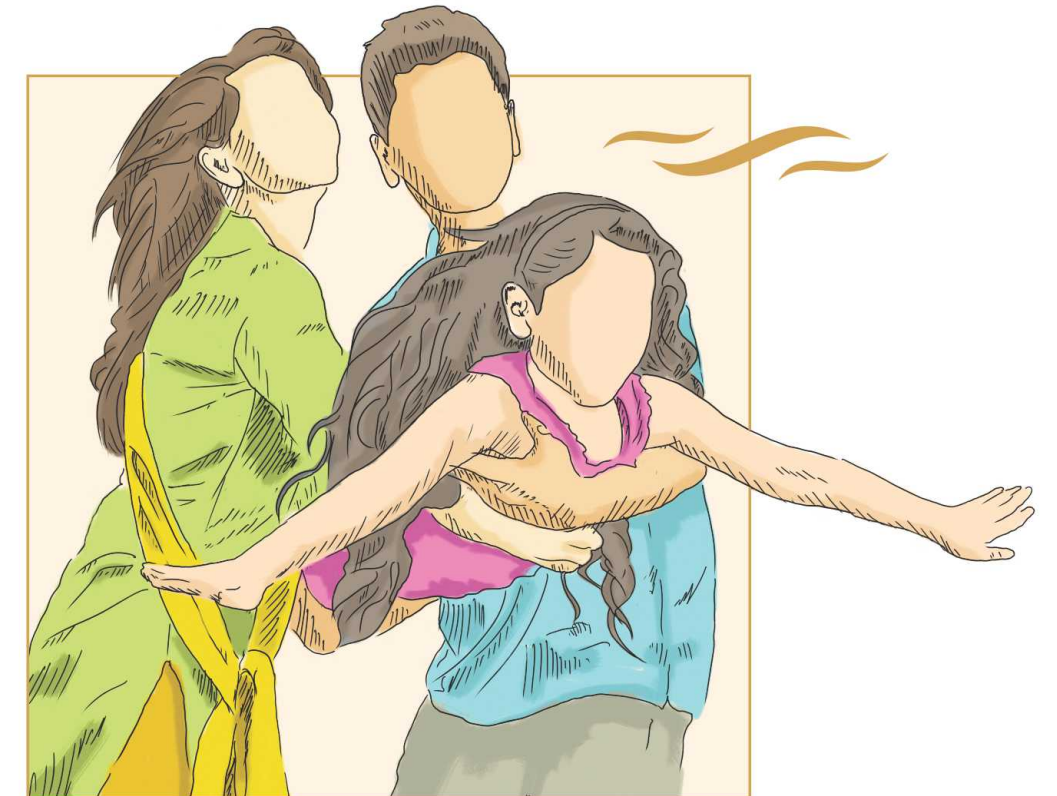
## 3 BHK Premium Apartments



We at Palash prime not just want you to breathe fresh air,  
We want you to breathe the fragrance of  
**pleasure, prosperity, and premium.**



PALASH PRIME  
PREMIUM LIVING



## The fragrance of Salutary Serenity

This overwhelmingly impressive abode will give you a feeling of luxury as well as a serene ambiance. Palash prime is crafted so cautiously that you will find a spectacular peaceful view from each and every habitat. Wide driveways surrounded by benevolent nature will make you fall in love whenever you pass through it. Let's welcome a future full of fortunate fragrance at your own palash prime.

The fragrance of  
Admirable Architecture



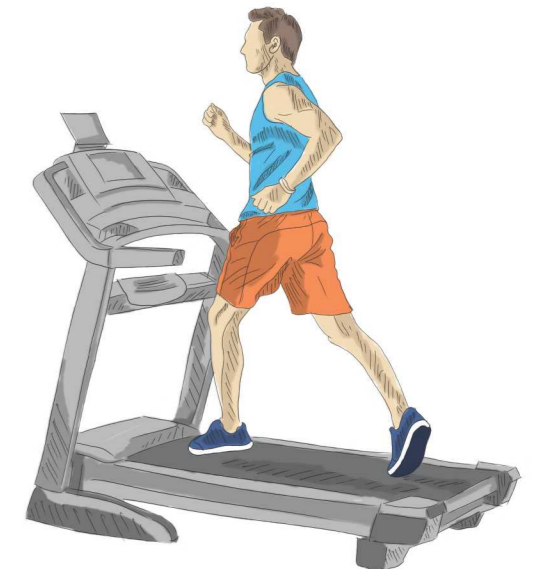


PALASH PRIME  
PREMIUM LIVING



## The fragrance of Absolute Amenities

We present utilitarian amenities at palash prime which are best of its kind. Beautiful waterbody will help you to fight with a mundane lifestyle and to enjoy peaceful nature. We have a beautiful pathway to enjoy wandering and have a good time in this area. There is appealing safe and secure children play area to make your children happier. For fitness, you will find a gym area with modern equipments of the best quality. For killing free time, we have an irresistibly designed indoor game area where you can enjoy a variety of games. Apart from this, we have specially designed sitting arrangements in this garden area for residents of palash prime.





## The fragrance of Green Galore

At Palash prime, we love and believe in pleasing nature and that is the reason why we are surrounded by the green ambience. This area is designed specially to enjoy the tranquility and to spend quality time with your family. Each resident of palash prime will find a sense of well being at this beautiful relaxing green color of the earth.

## Lifestyle Amenities



- Elegant Entrance Gate
- CCTV Camera
- 24 x 7 Security
- Landscape Garden
- 24 x 7 Water Supply
- Beautiful Waterbody
- Indoor Games
- Children Play Area
- Gymnasium
- Grand Foyer
- Yoga Space
- 1 Allotted Car Prking

PALASH PRIME  
PREMIUM LIVING



The fragrance of  
Lavish Living



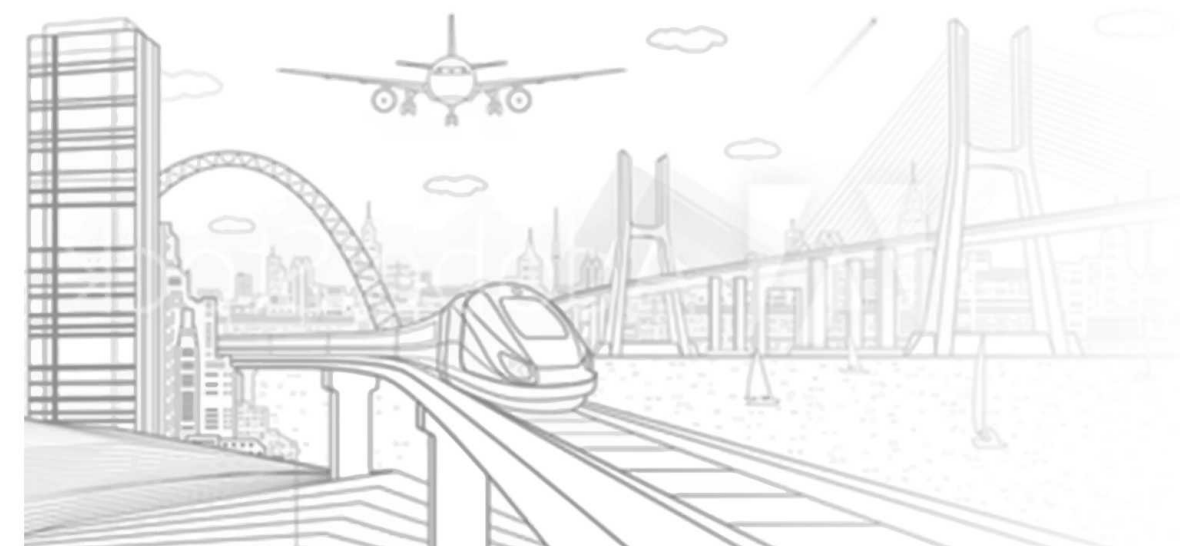
## Center of Everything

- Metro Station : 1.0 Kms
- S. P. Ring Road : 2.0 Kms
- International Airport : 7.0 Kms
- Sabarmati River Front : 2.0 Kms
- Apollo Hospital : 5.0 Kms
- Sabarmati Railway Station : 5.0 Kms
- Gift City, Gandhinagar : 8.0 Kms
- Mall & Multiplex : 4.0 Kms
- Nirma University : 5.0 Kms

**PALASH PRIME**  
PREMIUM LIVING

## The fragrance of Livable Location

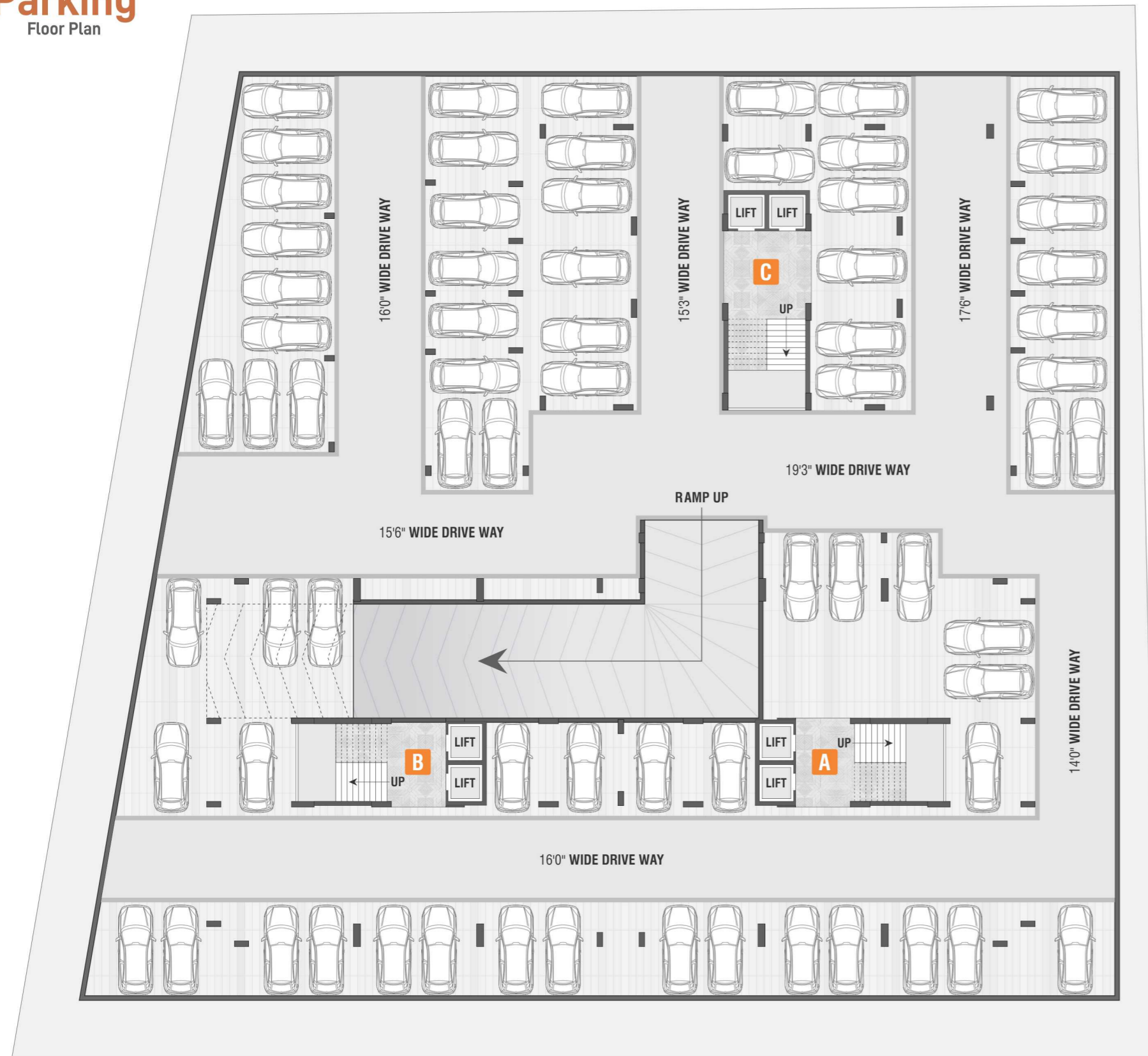
Palash prime is located at prime location of chandkheda. This is a rapidly developing area with plenty of services available nearby. From this premium abode, you will find each and everything in 10km radius, from hospitals to schools, from multiplexes to supermarkets, from railway station to airport, you just name it. Moreover, This building is surrounded by abundant nature as well. This is your perfect location to spend the rest of your life with your family





## Parking

Floor Plan



## Typical

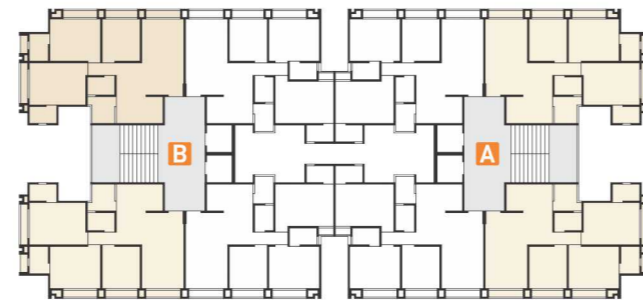
Floor Plan







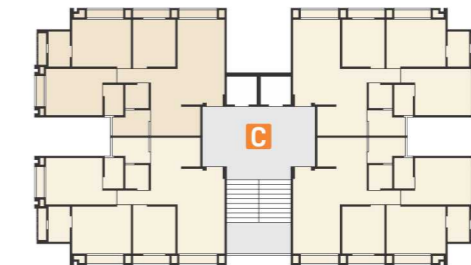
Block **A B**  
Unit No. : 101 to 901  
104 to 904



**3 BHK**  
UNIT FLOOR PLAN



Block **C**  
Unit No. : 101 to 901, 102 to 902  
103 to 803, 104 to 804



**PALASH PRIME**  
PREMIUM LIVING

## SPECIFICATIONS

### Foyer

- Ultra modern entrance foyer

### Best Quality Flooring

- Vitrified Flooring

### Kitchen

- Granite platform with SS sink having drain board
- Designer digital tiles up to lintel level
- Designer wash basin in common area

### Doors

- Decorative main door designer laminate along with handle and safety lock wooden door frames

### Windows

- Anodized aluminum section
- Full size windows in living room & three bedroom for air ventilation

### Road

- RCC road for internal campus

### Terrace

- Double coat fully water proofing with china mosaic

### Enamel

- Acrylic water proof point on external wall
- Acrylic colour in common areas
- Well refined putty on internal walls

### Electrification

- Modular switches & concealed circuit wiring
- Sufficient electric points in all rooms
- MCB in individual flat for safety
- High ampere special electric point for freeze, oven, mixer, RO plant, floor mill, washing machine, TV & telephone

### Plumbing

- Concealed modern plumbing system
- ISI brand CPVC & UPVC plumbing & drainage piping
- Jaquar fitting by excellent series



Site : Palash Prime,  
B/h Gujarat Football Academy, Nr. Zundal Circle,  
Chandkheda - Zundal Road, Chandkheda.

## LOCATION

Rera Regi, No. :

WEB : [gujrera.gujarat.gov.in](http://gujrera.gujarat.gov.in)

**Notes :** All Government legal charges, stamp duty, auda, common maintenance charges and service shall be borne extra by the member. ● In case of irregular payment 18%(annual) interest will be charged. ● In case of cancellation of unit 10% of payment received will be deducted as a management service charges and balance amount will be returned only after there sell of the unit. ● No external changes shall be allowed with prior permissions and shall be charges extra in advance. ● Dimensions and area mentioned in the brochure are approximate and indicative. ● This brochure is not a part of legal documents, it is only information and private circulation. ● All right are reserved by the developers to make any the scheme and shall be binding to all the members. ● Subject to Ahmedabad jurisdiction.

**PALASH PRIME**  
PREMIUM LIVING

**Developer**



**NITYA INFRA**

Site : Palash Prime, B/h Gujarat Football Academy,  
Nr. Zundal Circle, Chandkheda - Zundal Road, Chandkheda.

For more information : **+91 99253 93417, 9737946280**

**Architect**

**9th Street Architect**